

Head Office / Factory

46, Golden root-ro 66beon-gil,
Juchon-myeon, Gimhae-si,
Gyeongsangnam-do, Korea
T. +82 55 310 2100
F. +82 55 338 1917
E. sales@hanbalmasstech.com

Seoul Office

10-605, 200, Seochojungang-ro,
Seocho-gu, Seoul, Korea
T. +82 2 412 0851
F. +82 2 413 0272



COMPANY BROCHURE

For Pre-qualification

HMT

HANBAL MASSTECH LIMITED
MASS TRANSFER TECHNOLOGY

Company in General



ABOUT HANBAL MASSTECH LIMITED

Hanbal Masstech Limited (HMT) is a leading company which designs and manufactures tower tray, internal, packing, reactor internal, wire mesh demister, mist eliminator, etc. Our company has been providing these products for chemical companies, oil refineries, petrochemical plants, etc., and engineering and construction companies since it was founded in 1971.

Head Office / Factory

46, Golden root-ro 66beon-gil, Juchon-myeon, Gimhae-si, Gyeongsangnam-do, Korea
T. +82 55 310 2100 / F. +82 55 338 1917
sales@hanbalmasstech.com / www.hanbal.kr

Seoul Office

10-605, 200, Seochojungang-ro, Seocho-gu, Seoul, Korea
T. +82 2 412 0851 / F. +82 2 413 0272



West Gimhae Interchange 3Km



Busan Station 30Km
Gupo Station 17Km



Gimhae Air Port 20Km



Busan International Passenger Terminal 30Km

Mission



MISSION
01

Maintain promised deliver schedule with no compromise in quality.



MISSION
02

Maintain the best production line and machines for quality assurance.



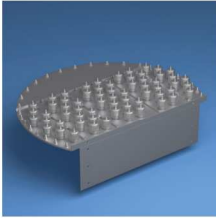
MISSION
03

Maintain open honest communication with customers.

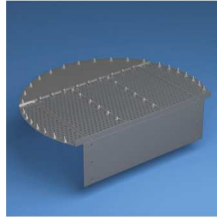


Main Products

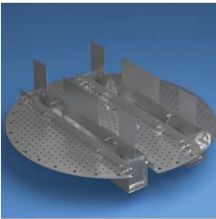
Trays



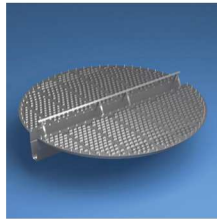
Bubble Cap Tray



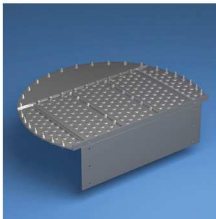
Sieve Tray



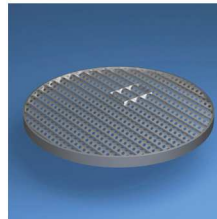
ECMD Tray



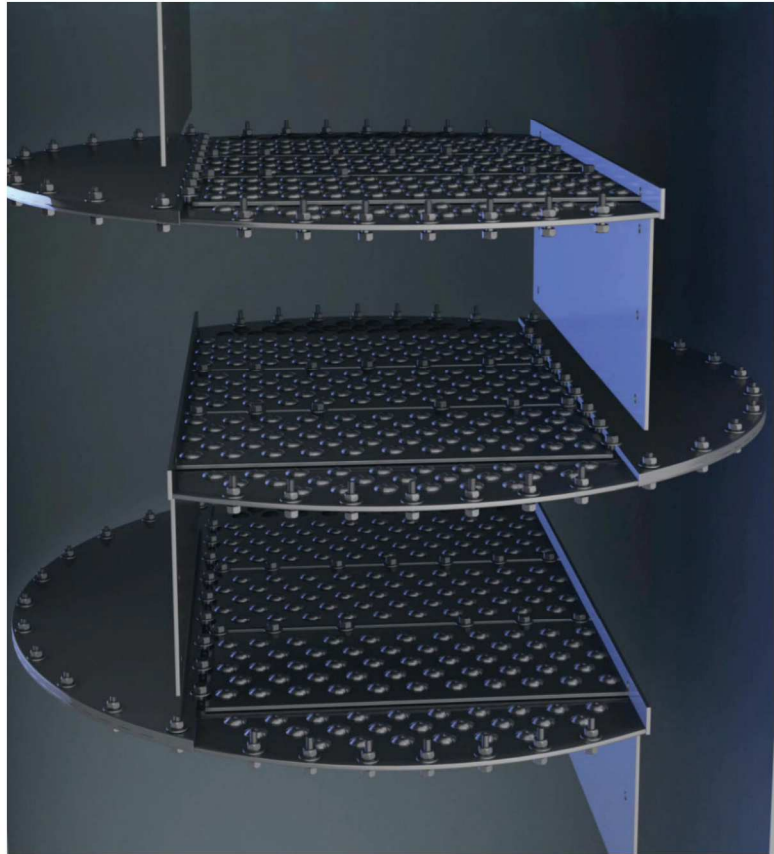
NHP Tray



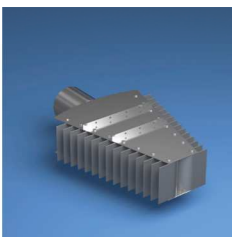
Valve Tray



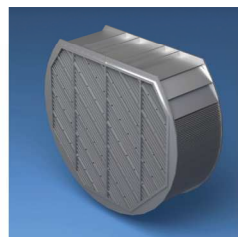
Ripple Tray



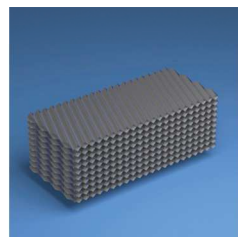
Separation Internals



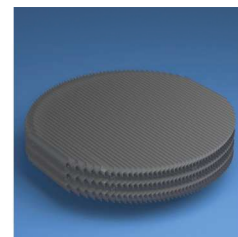
Inlet Device



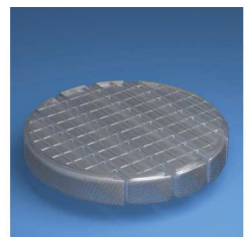
Cross-Flow Plate



CPI Coalescer



Vane Type Mist Eliminator



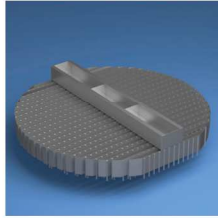
Wire Mesh Type Mist Eliminator



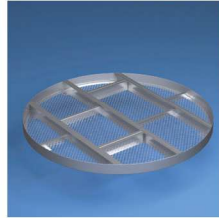
Packed Tower Internals



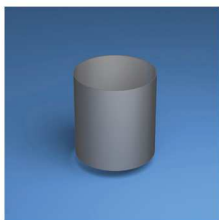
Feed Pipe



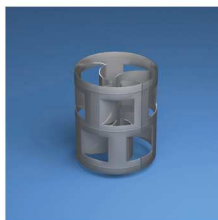
Distributor



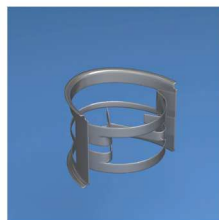
Bed Limiter



Raschig Ring



Pall Ring



NMTP



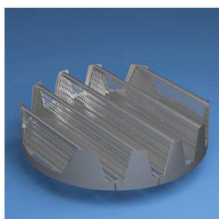
Plastic Super Saddle



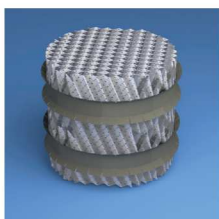
Ceramic Super Saddle



Frostflake



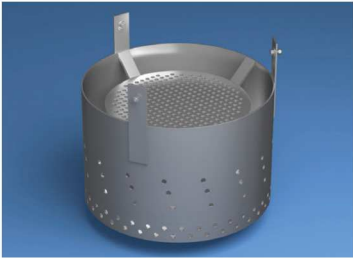
Support Plate



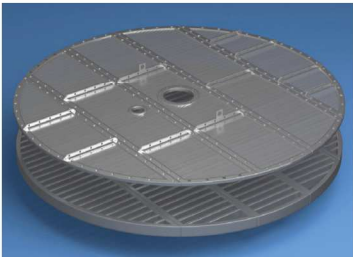
New Structured Packing



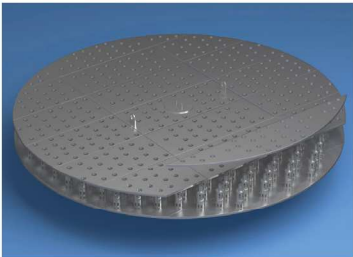
Reactor Internals



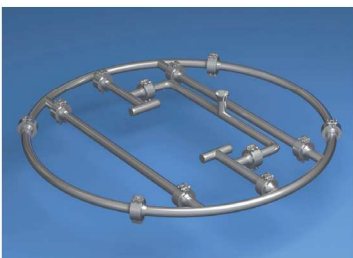
Inlet Basket



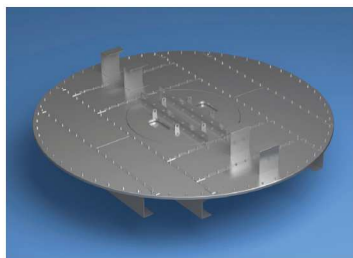
Interbed Screen & Grid Tray



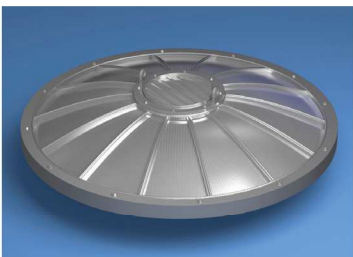
Perforated Tray & Nozzle Tray



Quench Ring



Mixing box



Bottom Catalyst Support



History

LAST 50 YEARS, FOR FURTHER 50 YEARS!



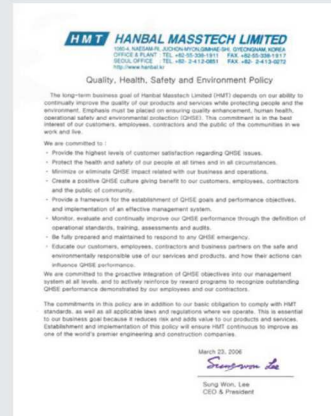
Certificates



Certificate of Membership:
2002 Awarded by
Fractionation Research, INC.



ISO 9001 : 2015



Quality, Health, Safety and Environment Policy



ISO 14001 : 2015



ISO 45001 : 2018



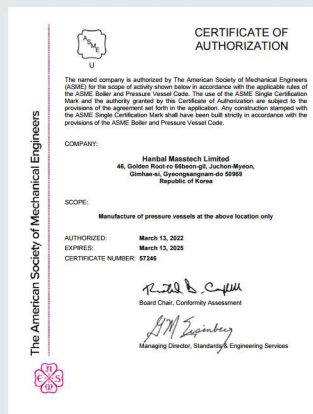
Certificate of patent
10-2182060



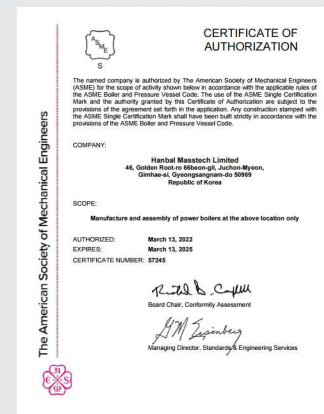
Certificate of patent
10-2243508



Certificate of INNO-BIZ :
2018 Awarded by Small and
Medium Business Administration
Republic of Korea



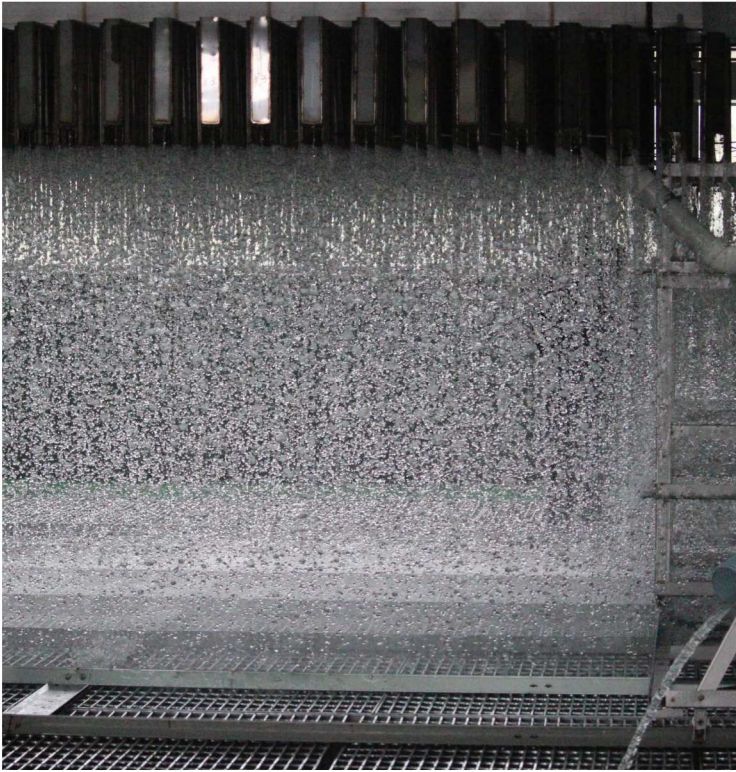
Awarded by ASME "U"



Awarded by ASME "S"

Distributor Test Facility

Capable of testing up to 15 meters in diameter



R&D Facility



Design Tool Software List

Process Simulators

PRO/II 2020(AVEVA)
 ASPEN HYSYS V12.2 (Aspentech)

Hydraulic Design

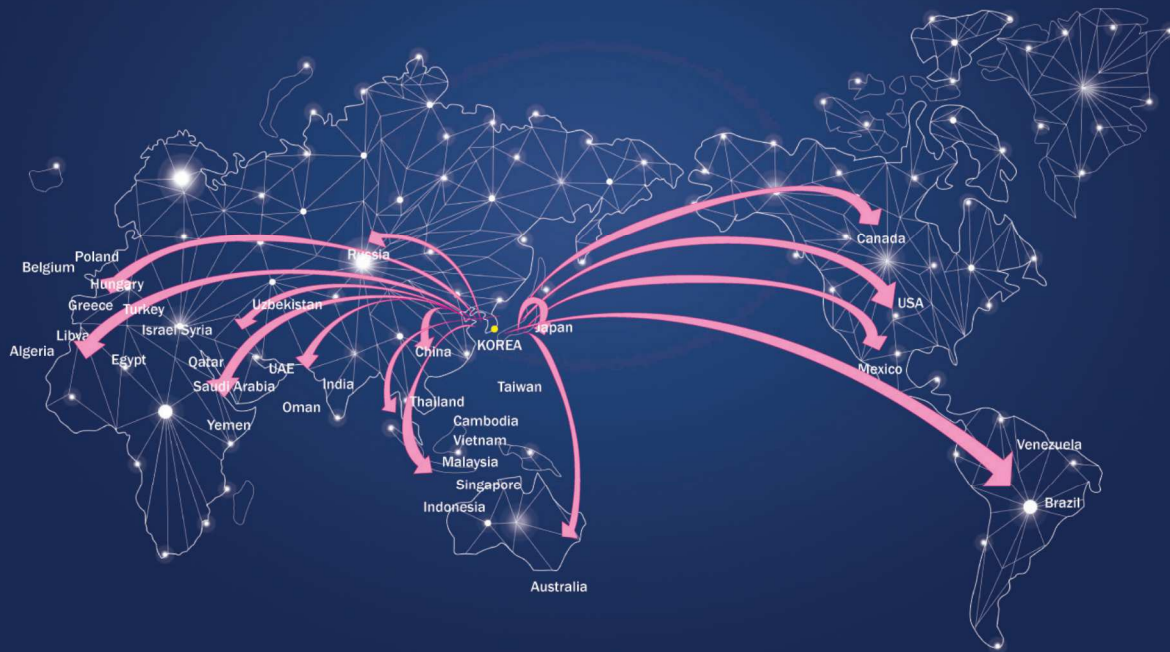
Tray Tower	Bubble cap Tray
	Bubble Cap Tray Design Program(HMT)
	Device Rating Program(FRI)
	Sieve Tray
	Sieve Tray Design Program(HMT)
	Device Rating Program(FRI)
	Valve Tray
	Valve Tray Design Program(HMT)
	Device Rating Program(FRI)
	Dual Flow Tray
Device Rating Program(FRI)	
Baffle Tray	
Device Rating Program(FRI)	
Packed Tower	Random Packing
	Packed Tower Design Program(HMT)
	Device Rating Program(FRI)
	Structured Packing
	Packed Tower Design Program(HMT)
Device Rating Program(FRI)	
Separation Equipment	Separator Design
	MySep (MySep Pte Ltd)
	Mist Eliminator
	Mist Eliminator Design Program(HMT)
	Coalescer
Coalescer Design Program(HMT)	

Mechanical Design

Tower Internal Strength Calculation Strength Calculation Program(HMT)

Design AutoCAD 2021(Autodesk) Solid Edge 2020(Siemens)

Major Customers



LICENSOR

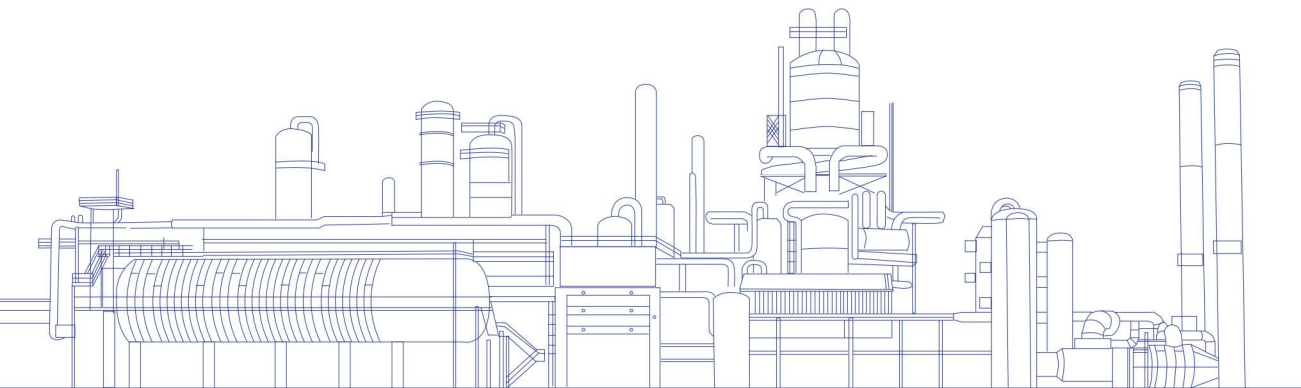
ABB Lummus
 Air Liquid
 Alliance Bechtel
 Axens
 Basf
 Chevron Lummus Global
 Exxon Mobil
 Fluor
 Foster Wheeler
 Haldor Topsoe
 International B.V.
 KBR
 Linde
 Shell Global Solutions
 Technip E&C Limited
 UOP A Honeywell Company
 Etc.

EPC

CB&I
 Chiyoda Corp.
 CTCI Corp.
 DL E&C
 Foster Wheeler
 GS E&C
 Hanwha E&C
 Hyundai E&C
 ICA FLUOR
 JGC Corp.
 National Oilwell Varco
 Petrofac
 Reilance
 Saipem S.P.A
 Samsung Engineering
 Tecnimont
 Technip Energies
 Toyo Engineering
 Sinopec Nanjing E&C
 Tecnicas Reunidas
 Etc.

CLIENT

Abu Dhabi National Oil Company
 Abu Dhabi Polymers(Borouge)
 Basf
 Chevron Lummus Global
 Eni
 GS Caltex Corporation
 Hanhwa Solutions
 HYUNDAI POWER SYSTEMS
 IRPC Public Company
 Korea Engineering Plastics
 Korea Petrochemical Industrial
 Kumho Petrochemical
 Kuwait National Petroleum Co
 LG Chem
 Mitsubishi Heavy Industries
 OCI Coporation
 Oman Oil Refineries and Petroleum
 PANASIA
 Pars Oil and Gas Company
 Pemex
 Pertamina
 Petronas
 PTT Global Chemical Public
 Qatar Energy
 Saudi Aramco
 Shell Global Solutions
 SK Innovation
 S Oil Corporation
 Tongsuh Petrochemical Corp.
 Thai Petrochemical
 Petrochemical Corporation of Singapore (Pte) Ltd
 Etc.



HANBAL MASSTECH LIMITED



HMT **HANBAL MASSTECH LIMITED**
MASS TRANSFER TECHNOLOGY

Head Office / Factory

46, Golden root-ro 66beon-gil, Juchon-myeon, Gimhae-si, Gyeongsangnam-do, Korea
T. +82 55 310 2100 / F. +82 55 338 1917 / www.hanbal.kr
sales@hanbalmasstech.com

Seoul Office

10-605, 200, Seochojungang-ro, Seocho-gu, Seoul, Korea
T. +82 2 412 0851 / F. +82 2 413 0272